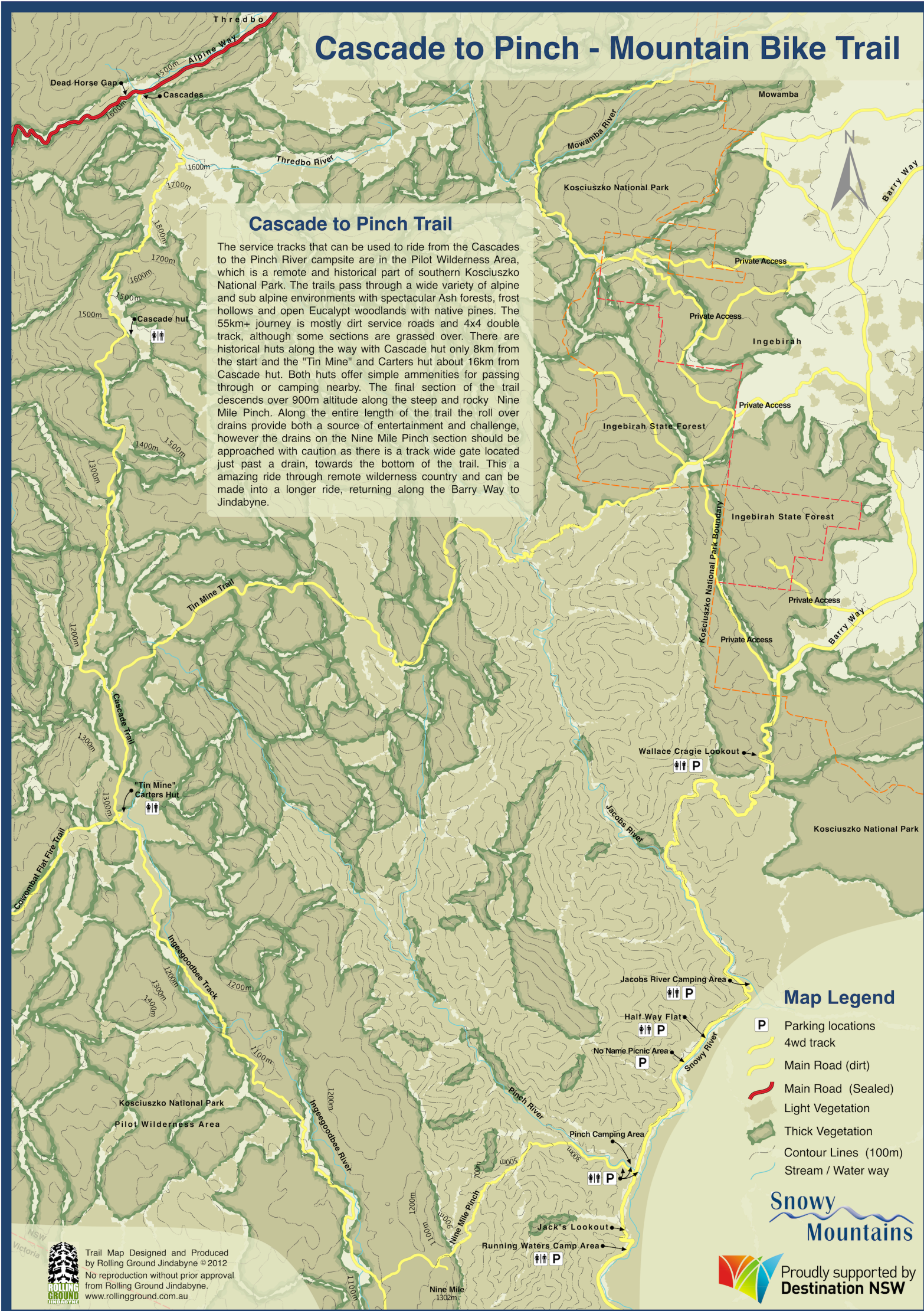


# Cascade to Pinch - Mountain Bike Trail

## Cascade to Pinch Trail

The service tracks that can be used to ride from the Cascades to the Pinch River campsite are in the Pilot Wilderness Area, which is a remote and historical part of southern Kosciuszko National Park. The trails pass through a wide variety of alpine and sub alpine environments with spectacular Ash forests, frost hollows and open Eucalypt woodlands with native pines. The 55km+ journey is mostly dirt service roads and 4x4 double track, although some sections are grassed over. There are historical huts along the way with Cascade hut only 8km from the start and the "Tin Mine" and Carters hut about 16km from Cascade hut. Both huts offer simple amenities for passing through or camping nearby. The final section of the trail descends over 900m altitude along the steep and rocky Nine Mile Pinch. Along the entire length of the trail the roll over drains provide both a source of entertainment and challenge, however the drains on the Nine Mile Pinch section should be approached with caution as there is a track wide gate located just past a drain, towards the bottom of the trail. This is an amazing ride through remote wilderness country and can be made into a longer ride, returning along the Barry Way to Jindabyne.



## Map Legend

- P** Parking locations
- 4wd track
- Main Road (dirt)
- Main Road (Sealed)
- Light Vegetation
- Thick Vegetation
- Contour Lines (100m)
- Stream / Water way

**Snowy Mountains**

Proudly supported by  
**Destination NSW**



Trail Map Designed and Produced  
by Rolling Ground Jindabyne © 2012  
No reproduction without prior approval  
from Rolling Ground Jindabyne.  
[www.rollingground.com.au](http://www.rollingground.com.au)